

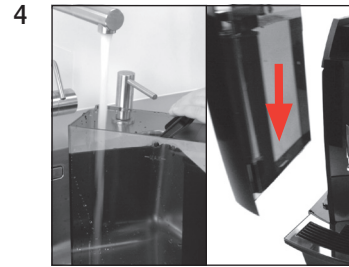
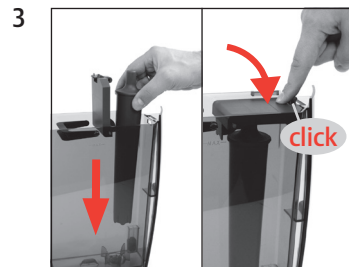
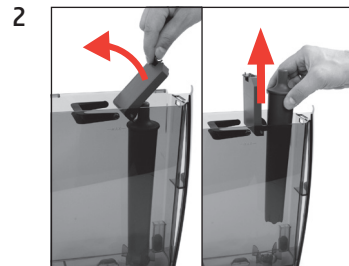
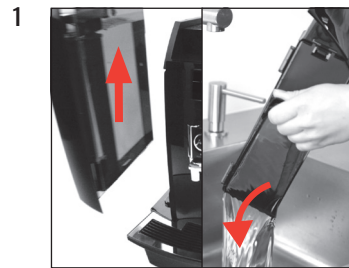
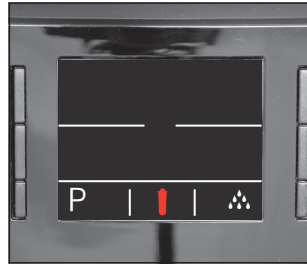
WE6

Changing the filter

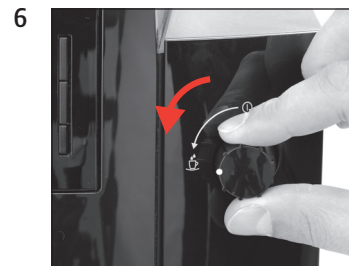
Equipment required:
CLARIS Pro Smart filter cartridge
(Art. 72819)



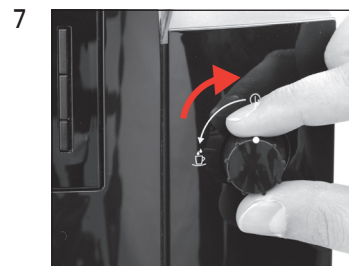
Precondition:



»Saved«
»Switch open«



»Filter is being rinsed«
»Switch close«



These short instructions do not replace the 'WE6 Instructions for Use'. Make sure you read and observe the safety information and warnings first in order to avoid hazards.